

## Statement of Non-discrimination

South Louisiana Electric Cooperative Association is the recipient of Federal financial assistance from the U.S. Department of Agriculture (USDA). The USDA prohibits discrimination in all its programs and activities on the basis of race, color, national origin, age, disability, and where applicable, sex, marital status, familial status, parental status, religion, sexual orientation, genetic information, political beliefs, reprisal, or because all or part of an individual's income is derived from any public assistance program. (Not all prohibited bases apply to all programs.) Persons with disabilities who require alternative means for communication of program information (Braille, large print, audiotape, etc.) should contact USDA's TARGET Center at (202) 720-2600 (voice and TDD). To file a complaint of discrimination, write to USDA, Director, Office of Civil Rights, 1400 Independence Avenue, S.W., Washington, D.C. 20250-9410, or call toll free (866) 632-9992 (voice) or (800) 877-8339 (TDD) or (866) 377-8642 (relay voice users). USDA is an equal opportunity provider and employer.

South Louisiana Electric Cooperative Assn., P.O. Box 4037, Houma, LA 70361

## Holiday office hours

In honor of the men and women who have protected our freedom... SLECA will be closed Monday, May 31 in observance of Memorial Day. A dispatcher and crews will be on duty for emergencies or interruption of service.

Have a safe and happy Memorial Day!

## Across the Board

March 1, 2010

Present were directors Alexander Doyle, president; David Luke, vice-president; Brian Rivet, secretary; Terry Trahan, treasurer; Tracy Duval, J. D. Boudreaux, Eroy Acosta, Roger Dale DeHart, Larry J. Daigle and Lloyd Gibson, advisor. Also attending were Michael Guidry, general manager, James Funderburk, attorney, and Elaine Robertson, member services supervisor.

After the invocation and pledge, the board approved the minutes of the February 1st regular board meeting, 161 new members and the ALEC Report.

The financial report, approved by the board, highlighted interest earnings, cash on hand, rate comparison showing SLECA having the lowest rates compared to other area utilities, line loss, kilowatt hour sales for the month, cumulative sales to date, cost of service, equity, TIER and electric and total revenue verses cost per kilowatt hour.

Following an update on upcoming schools, meetings and events, Mr. Guidry reported on the following: (1) SLECA continues to have the lowest rates in the area; (2) President Obama's healthcare bill removes the "special" treatment given to Nebraska and Louisiana but retains the tax on "Cadillac" plans; (3) The EPA has informed Congress that it will begin regulating greenhouse gas emissions for large facilities, including power plants, in 2011 but that could change if Congress passes energy legislation or blocks funding for EPA; (4) SLECA's safety accreditation score for the application was 94% and the onsite inspection was 97%; (5) SEDC representatives met with SLECA employees regarding the new computer system and software and the target date for completion of the accounting and billing software is by the end of July; (6) Joe Ticheli is gathering information on the discount prescription cards offered by Touchstone for distribution to the general membership and the board approved the purchase and distribution of these cards; (7) SLECA received a letter from the Department of Labor stating that they have discontinued the compliance evaluation of SLECA's Affirmative Action Program; (8) The position of CLECO, Entergy and Lafayette Utilities is that LaGen and therefore SLECA and SLEMCO should pay for the higher cost to dispatch power during transmission line upgrades of the Acadiana Load Project of which SLECA and SLEMCO disagree; (9) SLECA's compliance program is mostly complete but changes continue to be made when notified by NERC/SERC and SLECA again participated in the new NERC Alert System; (10) CFC issued a public statement that was agreed to by CoBank stating that a CoBank employee had for years been getting into CFC's protected site and had been obtaining confidential and proprietary information; and (11) There are a few date conflicts with upcoming SLECA board meetings.

Next, the board approved the low bid to remove the damaged underwater cable at Bayou LaCarpe.

The board then approved the manager's report and expenses; the safety report showing employees have worked 2,176,093 hours without a loss time accident since December, 1996 and the attorney's report and fees.

The meeting was then adjourned.

You may obtain copies of the minutes by contacting SLECA, P.O. Box 4037, Houma, LA 70361 or by calling (985) 876-6880 or 1-800-256-8826.

# SLECA News



Mike Guidry, Manager  
Alexander Doyle, President  
South Louisiana Electric Cooperative Assn.  
P.O. Box 4037, Houma, LA 70361 (876-6880) A Touchstone Energy Cooperative

## 2010 Annual Meeting

### Rates hold steady; SLECA keeps tabs on federal energy policy

SLECA General Manager Mike Guidry reminded members at the cooperative's 72nd annual meeting last month that the locally-owned organization "doesn't operate in a vacuum."

Guidry announced to the nearly 2,000 SLECA members and guests gathered at the Houma-Terrebonne Civic Center that through thriftiness and hard work by management, board representatives and employees, SLECA has done a remarkable job to hold the line against adverse economic conditions.

He pointed out that while power sales for SLECA have declined over the past year, the expenses asso-

ciated with delivering safe, reliable power to over 16,000 members have continued to climb.

For instance, he said, over the past 20 years the cost of a transformer has increased 73 percent and the cost of a bucket truck has increased 123 percent.

"We're suffering the same as you are," Guidry said. "In addition, we've gotten hit by four storms over the past few years. While the Federal Emergency Management Agency pays for a lot of that, they don't pay it all...and they don't pay it very quickly."

At the same time, Guidry noted, rates have remained stable, well below competing utilities. Since 1990, he said, while the cost of many other commodities have risen substantially and rates for both investor-owned and municipal power providers have also increased, according to Louisiana Public Service Commission records SLECA's rates have actually fallen from an average of \$76.90 per 1,000 kilowatt hours to 72.30.

Compared to customers of investor-owned and municipal utilities, SLECA members have pocketed literally thousands of dollars over the past few years,

30-40 percent higher."

Meanwhile, Guidry also announced that by mid-to late-summer members will receive their monthly bills in a different format. The new bill will not be in postcard form but will come in an envelop with more useful information about the consumer's account.

"We made this change because after 23 years we could longer continue to put more Band-Aids on our computer system. It's remarkable that we have been able to keep it going this long. We might give it a jazz funeral," Guidry said.

When he announced that members will soon be able to pay their bills online, many members in the audience applauded enthusiastically.

On another topic, Guidry commended the employees and board for working since December of 1996 without a lost-time accident and becoming a national leader in safety. SLECA recently participated in a pilot program for the Rural Electric Safety Accreditation Program.

Finally, Guidry provided a brief update on congressional activity regarding climate change legislation. Guidry, who serves as vice president of the National Rural Electrification Cooperative Association (NRECA), said the U.S. Senate is working on legislation after a cap-and-trade bill was narrowly passed by the House last summer.

He said the bill that passed the House would likely "double the price Americans pay for power" and he urged members to visit [www.ourenergy.coop](http://www.ourenergy.coop) to learn about the issues and demand that lawmakers take into account the interests of cooperative consumers when crafting energy-related legislation.

"We're not against clean air and clean water, but we're against anything that will double your cost for power," said Guidry, adding that he and some members of the board will travel to Washington to participate in the NRECA Legislative Conference and speak to lawmakers directly.

Also at the meeting, Rochelle Glispy performed a patriotic musical medley as a tribute to those serving in the armed forces, and the crowd was entertained by Cajun humorist and state lawmaker Jonathan Perry.

The 2010 Scholarship and Youth Tour winners were presented to the membership. Prior to the meeting there was a health fair, other community information booths, safety demonstrations, and a magic show, face painting and balloon sculptures for the children.

The winner of the grand prize 46-inch Sony flat screen TV was Lillian A. Rebardie. Fifty other door prizes were given away at the meeting and each registered member received a free gift.



Above, Lillian Rebardie is pictured with SLECA General Manager Mike Guidry after winning the grand prize 46-inch Sony flat-screen TV at SLECA's annual membership meeting. At left, two children at the annual meeting show off their face art.

## On-line payment option, billing changes coming

SLECA members will be able to pay their electricity bills on-line and take advantage of other changes coming this summer.

In addition to the on-line payment option, the locally-owned cooperative will send out monthly bills in a different format.

The new bills will be contained in an envelope and will provide members with more information about their individual energy usage and habits.

"We feel this is a positive change that gives members more options and more information to make decisions on their power consumption," said SLECA General Manager Mike Guidry.



## Congratulations to scholarship winners

As part of SLECA's continuing efforts to enhance higher educational opportunities, four local students have won scholarships for the 2010-2011 fall and spring semesters at Nicholls State or the L. E. Fletcher Community College. The scholarships, valued at \$1,000 each, were offered to graduating high school seniors to help with the costs of tuition, room and board, or books.

The scholarship winners are:

- Cody Benoit, a resident of Gray and a senior at Central Lafourche High School. Cody will be studying nursing at Nicholls.
- Joshua Boquet, who lives in Houma and is a senior at Terrebonne High School. Joshua will be studying psychology at Nicholls.
- Courtney Lynee Collie is from Houma and is a senior at Houma Christian School. She also plans to attend Nicholls and major in general studies.
- Victoria Leigh Bergeron, who is from Gray and is a senior at Vandebilt High School. She plans on studying communications disorders at Nicholls State University.

As part of its commitment to local communities, SLECA has offered scholarships to local students seeking to become tomorrow's doctors, lawyers, engineers and professionals for nearly two decades to enhance economic opportunities for our members and their children.



Clockwise from top-left: A child holds tightly to a bunch of decorative balloons; SLECA Directors Larry Daigle, J.D. Boudreaux and Brian Rivet get sworn into office by Clerk of Court Bobby Boudreaux; General Manager Mike Guidry makes a presentation to members; and Cajun humorist Jonathan Perry puts the crowd in stitches.

ciated with delivering safe, reliable power to over 16,000 members have continued to climb.

For instance, he said, over the past 20 years the cost of a transformer has increased 73 percent and the cost of a bucket truck has increased 123 percent.

"We're suffering the same as you are," Guidry said. "In addition, we've gotten hit by four storms over the past few years. While the Federal Emergency Management Agency pays for a lot of that, they don't pay it all...and they don't pay it very quickly."

Guidry said.

Against this sobering economic news, Guidry announced that the SLECA board has authorized a rate study to ensure that the co-op has enough revenue to continue to provide reliable, affordable power.

"We're non-profit and we operate on a slim margin, but I can assure you we're continuing to do everything we can," Guidry said. "Even if the rate study finds that we need a very modest rate increase, it won't be anywhere near our competitors, who are

Your Cooperative Connection

# LOUISIANA COUNTRY

SLECA NEWS  
Pages 6-7 - May 2010  
Vol. 27, No. 2



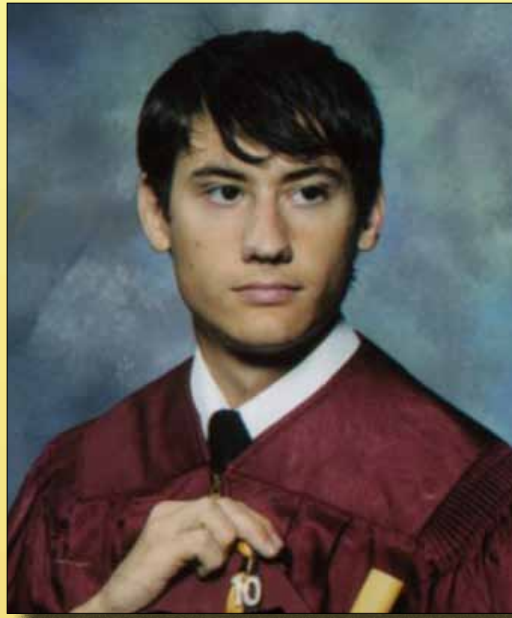
## Congratulations to SLECA's 2010 Scholarship Winners



**Victoria Leigh Bergeron**  
Vandebilt High School



**Cody Benoit**  
Central Lafourche High School



**Joshua Boquet**  
Terrebonne High School



**Courtney Lynee Collie**  
Houma Christian School